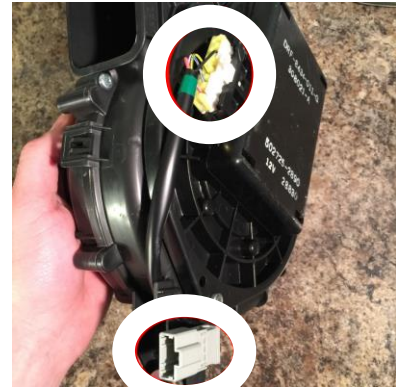


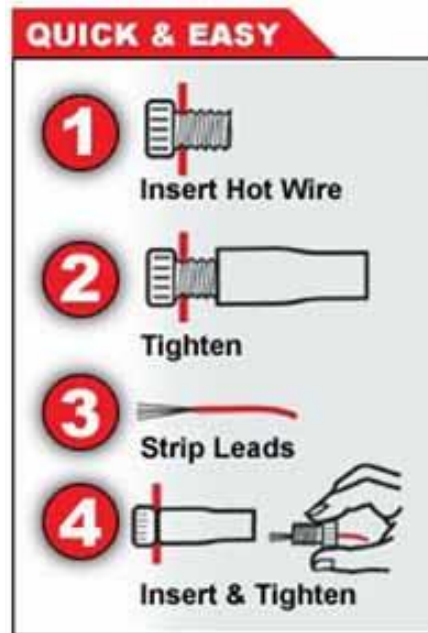
Grid Charger Installation for 2003-2005 Honda Civic Hybrid

Installation

1. Disconnect the 12V front battery positive lead.
2. Remove the rear trunk carpeting on the passenger side (Left picture below).



3. Remove the fan harness with the two connectors, you do not need to remove the fan itself (Right picture above).
4. Cut covering away from the harness wires, careful not to cut the wires.
5. Using the Posi-tap connectors, connect the corresponding colors, **RED / BLACK / BLUE**, from the fan connector removed in step 3, to the wires from the RBbatteries fan controller board. 1. Unscrew the cap with a slot and slide it over the car's wire. 2. Then tighten to the side of the Posi-tap body with a pin sticking out. 3. Strip back a 1/2" of the three wires (they may already be stripped). 4. Then take the other cap and put it over those wires as shown below. While applying slight pressure, screw the cap into the Posi-tap body. Do this for each of the connections; **red, blue, and black**.

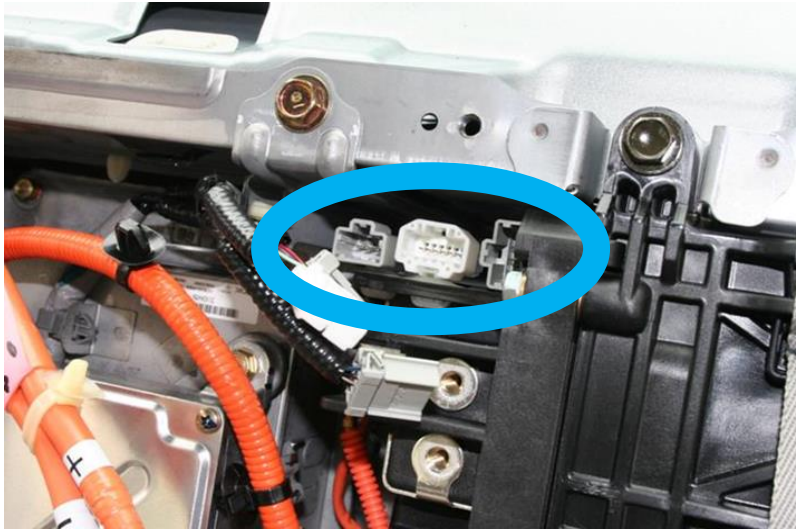


6. Reassemble the fan harness back into the fan and leave the rest of the vehicle harness in the trunk. You will need to feed it through the back of seat. You will do this later in the instructions.
7. Remove the rear bottom and back cushions. The bottom cushion has clips near the front and pop off. The rear cushion, near the bottom, has 10mm bolts.
8. Remove the IMA switch cover (T-30 torx bolts). Remove the red safety and **switch to the OFF position**.
9. Remove the IMA compartment cover (T-30 torx bolts).

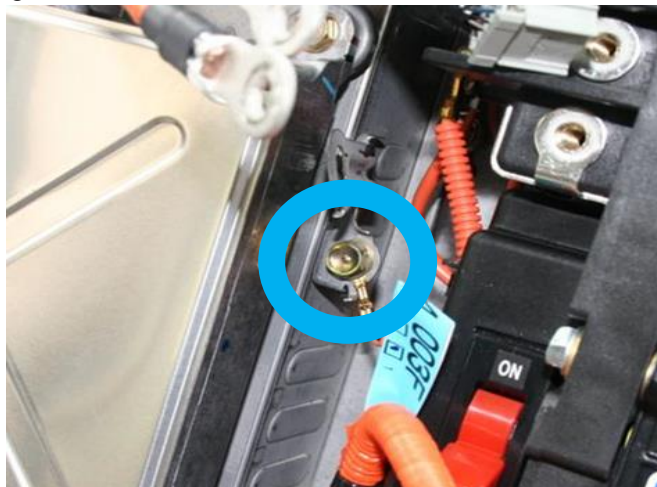
10. Measure across the two large orange cables with a DMM (voltage meter) to less than 10V to continue. If it's not less than 10V contact RBatteries. Remove the two large orange cables, 10mm bolts (white circle). Remove the large orange connector (blue circle). There are a couple retaining clips to pop out to get the cable loose.



11. Unplug these 3 connectors at the top of the battery.



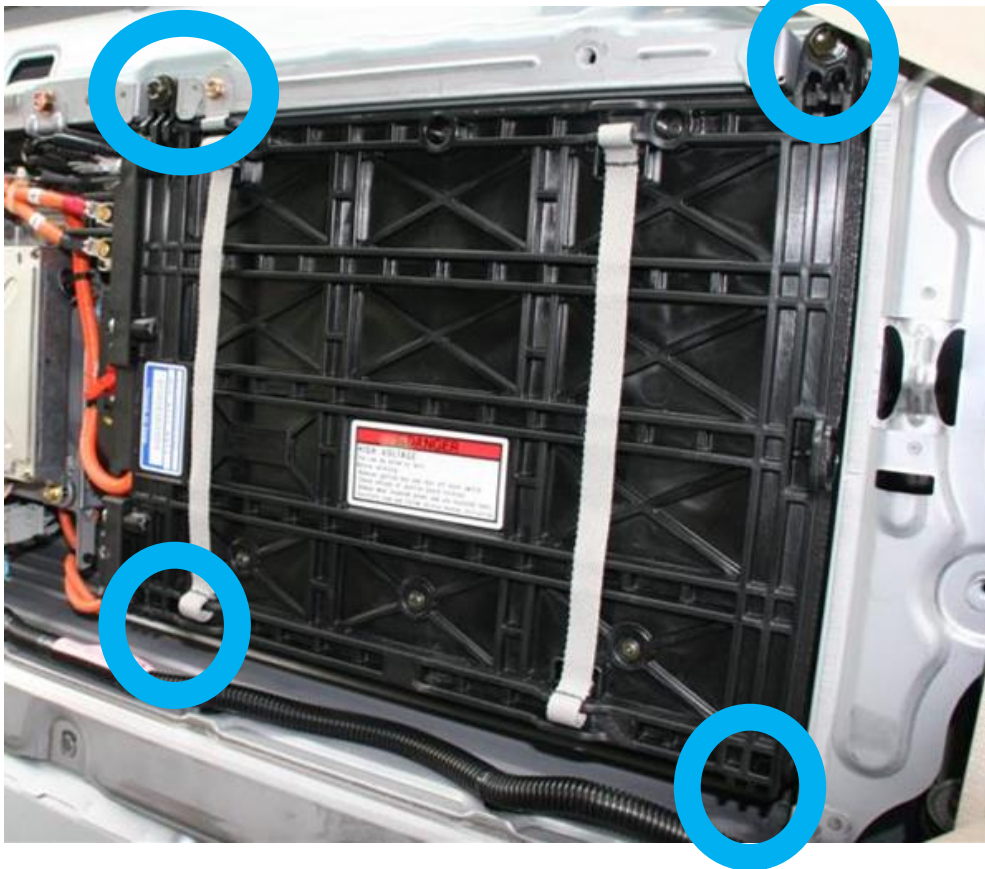
12. Remove this ground lug.



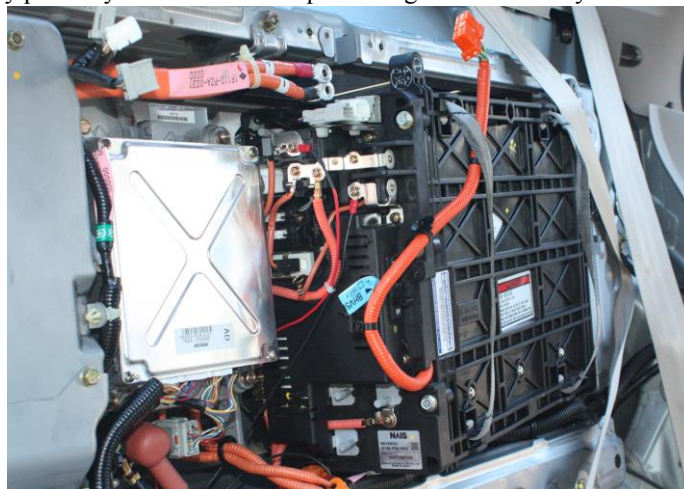
13. Unplug this orange connector towards the bottom left of the battery.



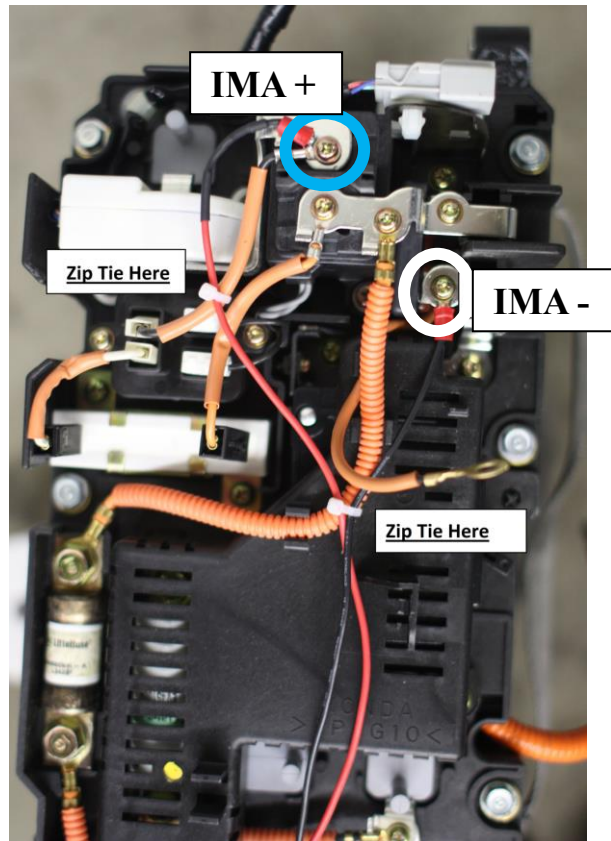
14. Remove the four 12mm bolts. Next to the upper left bolt also remove the single 10mm bolt with the clip. The bottom two bolts are underneath.



15. Pull the battery part way out. You can keep the weight of the battery on the car and not you.



16. Feed the IMA+ and IMA- connections through the backseat. Match the IMA vehicle harness to each connection. Unscrew each Phillips screw and reattach with the harness connections attached. **IMA+**, blue circle and **IMA-**, white circle.



17. Follow this guide in reverse to reassemble, but don't install the seats or IMA switch cover.
18. Plug in the grid charger to the now installed vehicle harness, connect to an AC outlet (and switch on), and ensure the car IMA fan turns on. The voltage display will show a really high value of 200V+ (usually 200V-230V). Flip the IMA safety switch on and you should see the voltage drop to your pack's voltage, 140V-170V typically. If those two things happen, you're good to go! **Flip the IMA safety switch back off.** Remove the AC power from the charger and remove the charger from the vehicle harness.
19. If everything is working, reassemble the IMA switch cover and seats (remember to switch the IMA safety back on during step 11).

DANGER HIGH VOLTAGE!!

*****RBBatteries is not responsible for misuse or failure of the products. By installing this device you are accepting any and all responsibility*****

This is enough power to hurt you, be careful! Have questions? Contact me by eBay or RBBatteries@gmail.com.