

Grid Charger Installation for 2005-2007 Honda Accord Hybrid

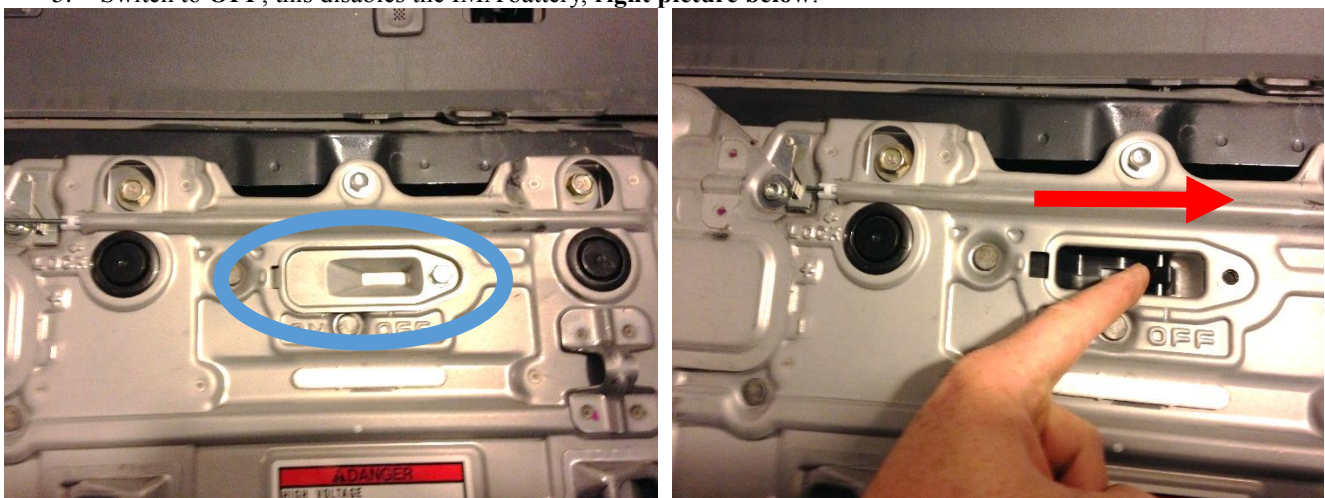
Tools needed:

10mm Socket
8mm Socket
T30 Torx
Small flat blade screw driver
Multi-meter
Wire Strippers

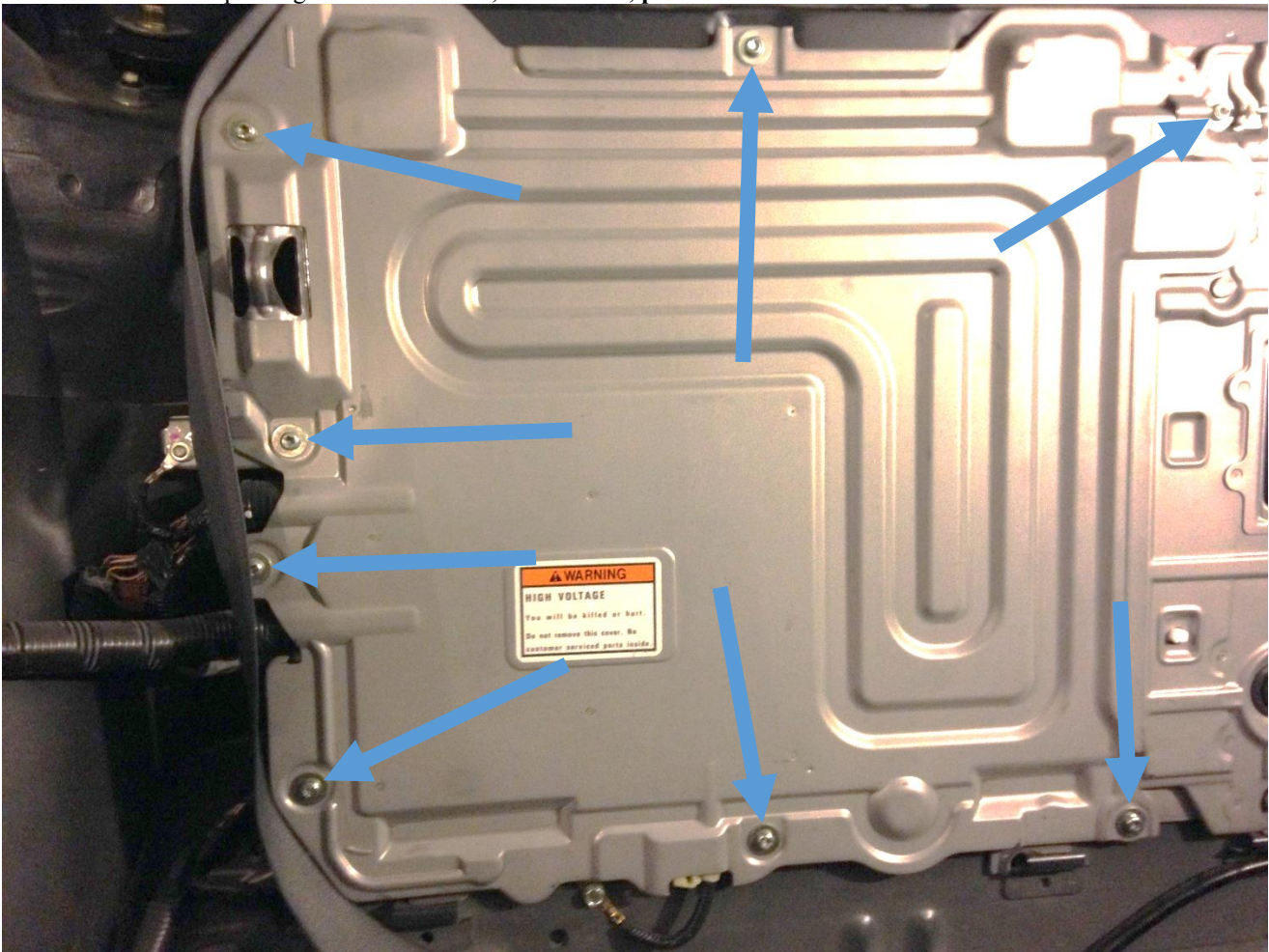
1. **Disconnect both of the front 12V battery leads.**
2. Remove the rear seat bottom cushion, there are two front clips that hold the front of the cushion and a single 10mm Torx bolt, **left picture below**.
3. Remove the back cushion, three 10mm Torx bolts. At the bottom of the cushion, **right picture below** shows the bolt on the driver's side. There's another on the passenger side in the same location and the last is in the center near the passenger seatbelt anchor.



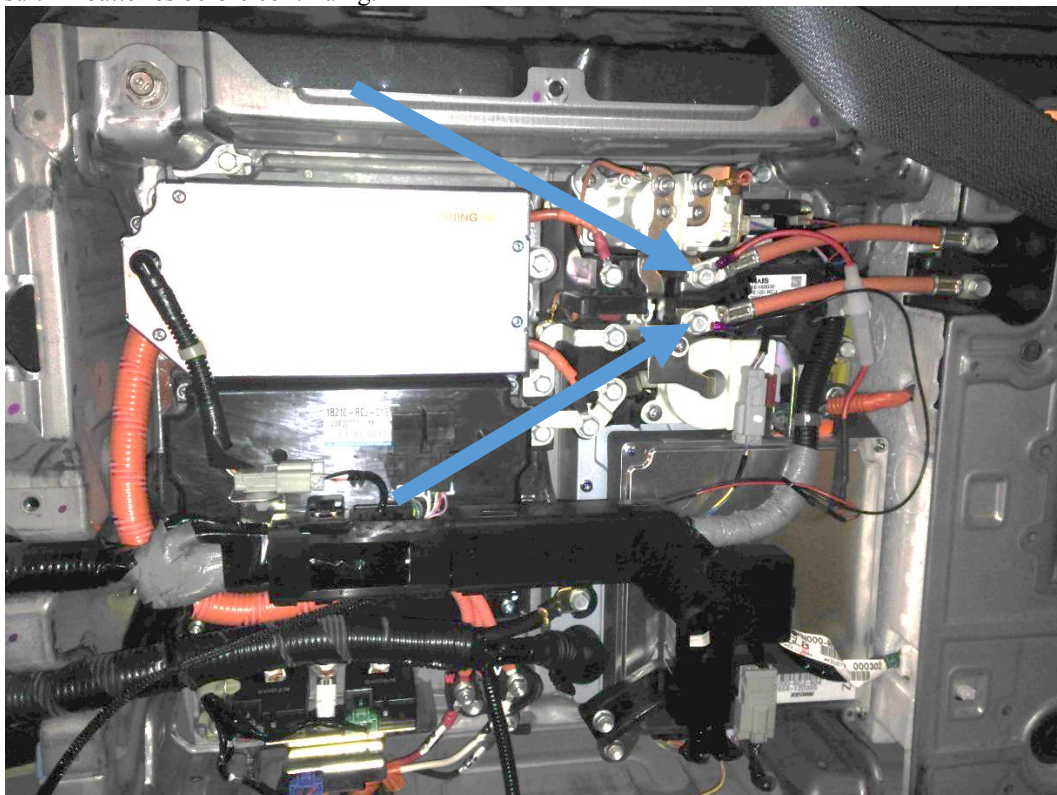
4. Remove the IMA switch cover plate, one 10mm bolt, **left picture below**.
5. Switch to **OFF**, this disables the IMA battery, **right picture below**.



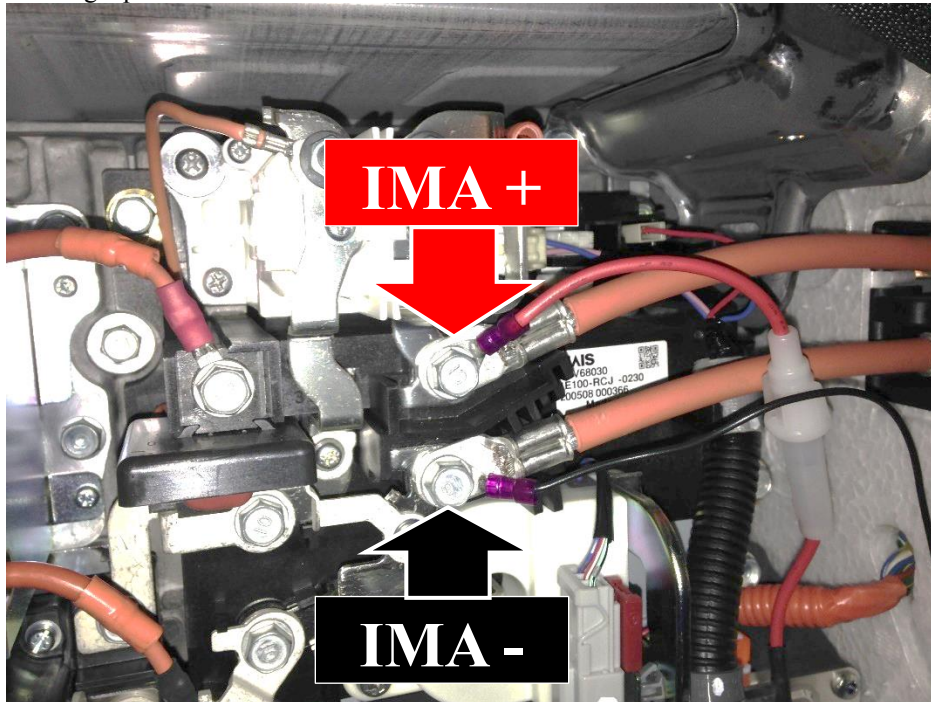
6. Remove the passenger side IMA cover, 8 Torx bolts, **pictured below.**



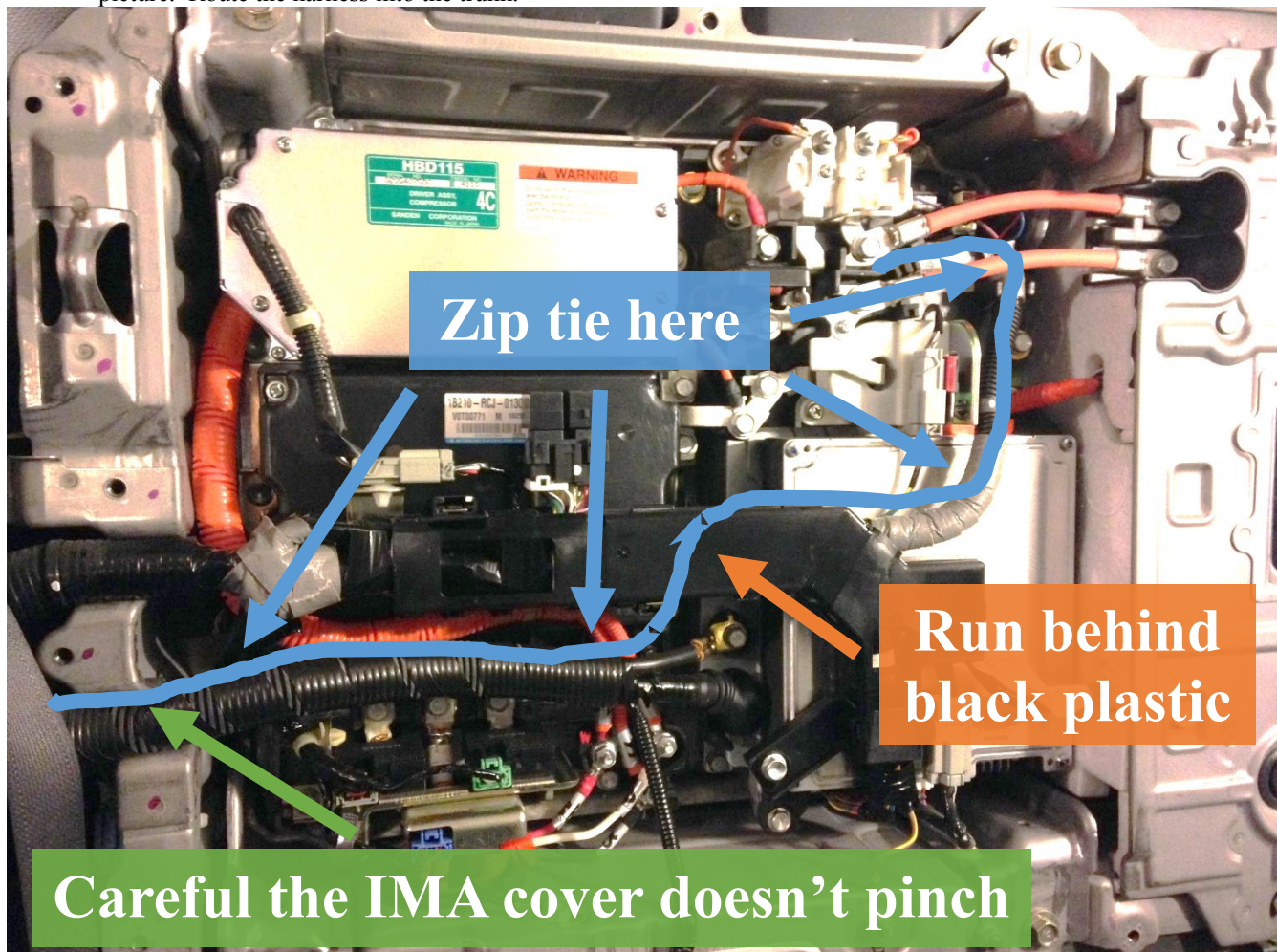
7. Once the cover is removed, carefully **(DO NOT touch anything with your hand)** measure the DC voltage with a multi-meter across the two large orange cables, **blue arrows**. If it's less than 10V continue, if it's more, please consult RBbatteries before continuing.



8. Remove the two 10mm bolts holding down the orange cables and attach the **IMA +** to the upper cable and the **IMA -** to the lower cable, **carefully follow the picture below**. Reattach the bolts. Zip tie the wires so they won't move and won't get pinched.



9. Route the IMA harness according to the picture below. Make sure to run it behind the black plastic as noted in the picture. Route the harness into the trunk.



10. Open the trunk.
11. Remove the passenger side trunk carpet, 8mm bolt needs removed and the rest are clips that pop-out, **left picture below**. Carpet removed, **right picture below**.

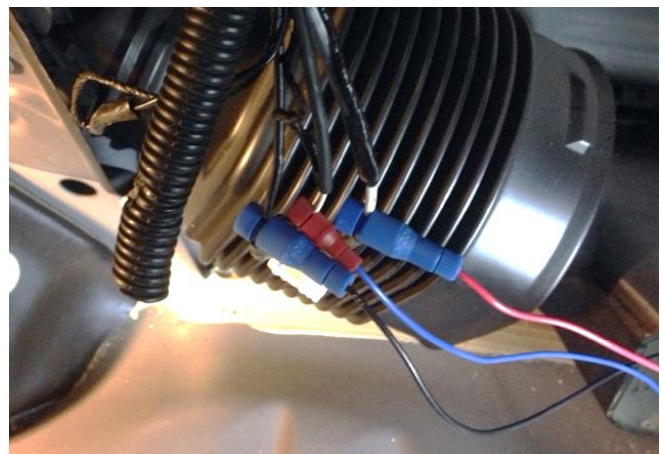
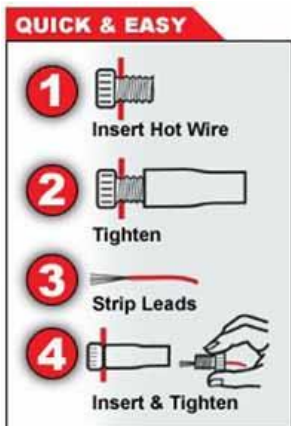


12. Disconnect the fan connector, **left picture below**.
13. Peel back the loom and tape covering by 4-5 inches, **right picture below**.



14. Run the Fan Red / Black / Blue wires to this area. Leave the white connector on the vehicle harness in the trunk.
15. Using the Posi-Tap connectors, connect the wires from the fan controller board the wires in the fan connector. Use the following table to make the correct connections.

Posi-Tap Connector	RB Fan Controller Wire Color	Car Fan Harness Wire Color
Large	Red	Large White
Small	Blue	Small White
Large	Black	Large Black



16. Plug the fan connector, disconnected in step 15, back into the fan.
17. Now you need to test the charger before assembling everything back up. Plug in the grid charger to the now installed vehicle harness, connect to an AC outlet (and switch on), and ensure the car IMA fan turns on. The voltage display will show a really high value of 200V+ (usually 220V-230V). Flip the IMA safety switch on and you should see the voltage drop to your pack's voltage, 140V-170V typically. If those two things happen, you're good to go! **Flip the IMA safety switch back off.** Remove the AC power from the charger and remove the charger from the vehicle harness.
18. If everything is working, follow this guide in reverse to reassemble (remember to flip the IMA safety switch back on during step 5).

DANGER HIGH VOLTAGE!!

*****RBbatteries is not responsible for misuse or failure of the products. By installing this device you are accepting any and all responsibility*****

**This is enough power to hurt you, be careful! Have questions? Contact me by eBay or
RBbatteries@gmail.com.**